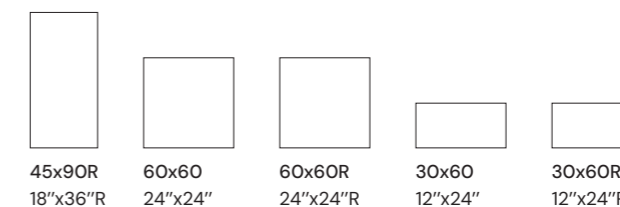


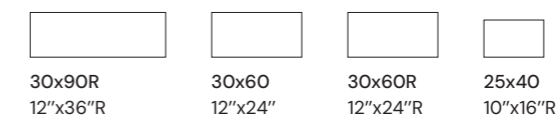
SPHATA



Porcelânico · Porcelain Tiles
Grès Cérame · Feinsteinzeug



Revestimento · Wall tiles
Faïence · Wandfliesen



Porcelânico · Porcelain Tiles
Grès Cérame · Feinsteinzeug



Sphata Beige **Nat.**
45x90R 448x898mm R28



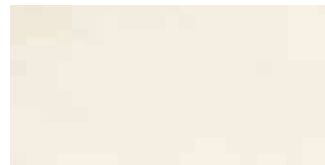
Sphata Nut **Nat.**
45x90R 448x898mm R28



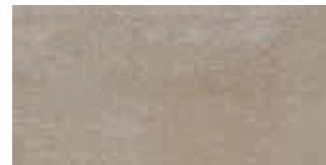
Sphata Beige **Nat. Soft**
60x60 608x608mm P27 P27
60x60R 598x598mm R24 R24



Sphata Nut **Nat. Soft**
60x60 608x608mm P27 P27
60x60R 598x598mm R24 R24



Sphata Beige **Nat. Soft**
30x60 305x605mm P26 P26
30x60R 298x598mm R23 R23



Sphata Nut **Nat. Soft**
30x60 305x605mm P26 P26
30x60R 298x598mm R23 R23



Sphata Decor Beige **Nat. Soft**
30x60 305x605mm P27 P27
30x60R 298x598mm R24 R24



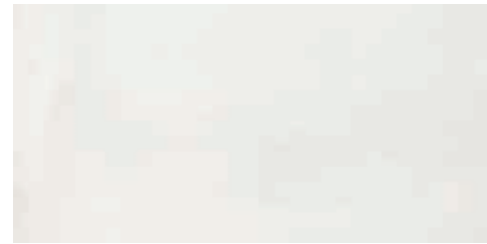
Sphata Decor Nut **Nat. Soft**
30x60 305x605mm P27 P27
30x60R 298x598mm R24 R24



Sphata Nut 60x60R

www.recer.pt

Porcelânico · Porcelain Tiles
Grès Cérame · Feinsteinzeug



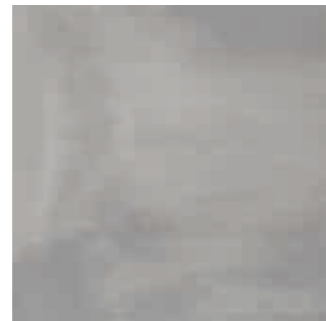
Sphata Grey Nat.
45x90R 448x898mm R28



Sphata Dark Grey Nat.
45x90R 448x898mm R28



Sphata Grey Nat. Soft
60x60 608x608mm P27 P27
60x60R 598x598mm R24 R24



Sphata Dark Grey Nat. Soft
60x60 608x608mm P27 P27
60x60R 598x598mm R24 R24



Sphata Grey Nat. Soft
30x60 305x605mm P26 P26
30x60R 298x598mm R23 R23



Sphata Dark Grey Nat. Soft
30x60 305x605mm P26 P26
30x60R 298x598mm R23 R23



Sphata Decor Grey Nat. Soft
30x60 305x605mm P27 P27
30x60R 298x598mm R24 R24



Sphata Decor Dark Grey Nat. Soft
30x60 305x605mm P27 P27
30x60R 298x598mm R24 R24



Sphata Dark Grey 60x60R



Rodapé*	8x60	8x60R
7,8mm U22	7,8mm U25	



Degrau*	45x90R	30x60	30x60R
9mm U50	8,5mm U36	7,8mm U34	8,5mm U39
			7,8mm U35



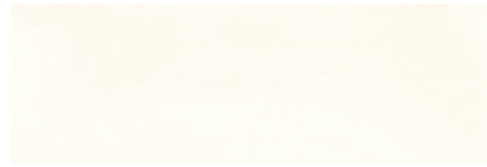
Degrau com bordo	30x90R	30x60	30x60R
9mm U65	8,5mm U60	7,8mm U58	8,5mm U61
			7,8mm U59

Formato (cm)	Formato (mm)	Espessura (mm)	Peças	m² aprox	Kg	Caixas	m² aprox	Kg
Size (cm)	Size (mm)	Thickness (mm)	Pieces	sqm approx		Boxes	sqm approx	
45x90R	448x898	9	4	1,61	31,50	28	45,08	908
60x60	608x608	8,5	4	1,48	27,40	30	44,40	842
60x60R	598x598	8,5	4	1,43	26,50	36	51,48	968
30x60	305x605	7,8	8	1,47	24,84	40	58,80	1013
30x60R	298x598	7,8	8	1,43	23,93	40	57,20	975
8x60**	80x608	7,8	13	7,80	10,60	96	748,80	1018
8x60R**	80x598	7,8	13	7,80	10,20	96	748,80	994

* Ver quantidade mínima na pág. 458 - See minimum quantity on page 458 - Voir la quantité minimale à la page 458 - Mindestmenge siehe Seite 458

** Rodapé; Metros lineares - Skirting; Linear meters - Plinthe; Mètres linéaires - Sockelleisten; Laufende Meter

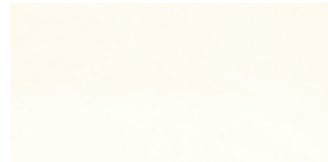
Revestimento · Wall tiles
Faïence · Wandfliesen



Sphata White
30x90R 298x898mm W21



Sphata Beige
30x90R 298x898mm W21



Sphata White Rev
30x60 310x610mm M25
30x60R 298x598mm W18



Sphata Beige Rev
30x60 310x610mm M25
30x60R 298x598mm W18



Sphata White
25x40 250x400mm M15



Sphata Beige
25x40 250x400mm M15



Sphata Grey
30x90R 298x898mm W21



Sphata Grey Rev
30x60 310x610mm M25
30x60R 298x598mm W18



Sphata Grey
25x40 250x400mm M15



Sphata Beige 60x60R · Sphata Beige 30x60R · Sphata Decor Beige 30x60R

Formato (cm) Size (cm)	Formato (mm) Size (mm)	Espessura (mm) Thickness (mm)	Peças Pieces	m ² aprox sqm approx	Kg	Caixas Boxes	m ² aprox sqm approx	Kg
30x90R	298x898	12	3	0,80	15,83	54	43,20	886
30x60	310x610	9,5	6	1,13	19,15	40	45,20	793
30x60R	298x598	9,5	6	1,07	17,50	40	42,80	720
25x40	250x400	8	10	1,00	14,08	72	72,00	1036