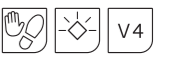


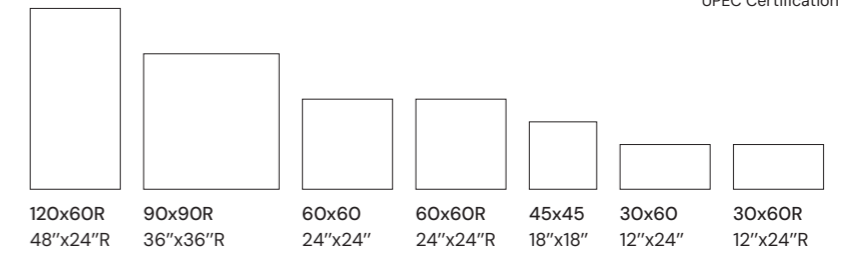


METALCRETE

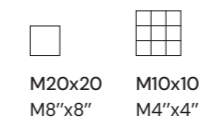
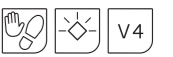
Porcelânico · Porcelain Tiles
Grès Cérame · Feinsteinzeug



Under evaluation for
UPEC Certification



Grés Vidrado · Glazed tiles
Grès émaillé · Glasiertes Steinzeug



Porcelânico · Porcelain Tiles
Grès Cérame · Feinsteinzeug



Metalcrete Warm Platinum Nat.
120x60R 1198x598mm R32



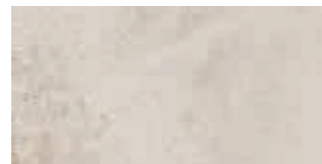
Metalcrete Warm Platinum Nat. Plus
60x60 608x608mm P24 P24
60x60R 598x598mm R19 R19



Metalcrete Warm Platinum Nat.
45x45 455x455mm P19



Metalcrete Warm Platinum Nat.
90x90R 888x888mm R32



Metalcrete Warm Platinum Nat. Plus AS
30x60 305x605mm P22 P22 P22
30x60R 298x598mm R16 R16 R16



Mosaic Metalcrete Warm Platinum (5x30) Nat.
30x30 298x298mm R45

Grés Vidrado · Glazed tiles
Grès émaillé · Glasiertes Steinzeug



Metalcrete Warm Platinum (M10x10) Plus
30x30 297x297mm G27



Metalcrete Warm Platinum Nat.
M20x20 197x197mm G23



Metalcrete Decor Warm Platinum Nat.
M20x20 197x197mm G23



Metalcrete Warm Platinum 90x90R · Metalcrete Warm Platinum 120x60R · Mosaic Corten (5x30) 30x30

Porcelânico · Porcelain Tiles
Grès Cérame · Feinsteinzeug



Metalcrete Warm Silver Nat.
120x60R 1198x598mm R32



Metalcrete Warm Silver Nat. Plus
60x60 608x608mm P24 P24
60x60R 598x598mm R19 R19



Metalcrete Warm Silver Nat.
45x45 455x455mm P19



Metalcrete Warm Silver Nat.
90x90R 888x888mm R32



Metalcrete Warm Silver Nat. Plus AS
30x60 305x605mm P22 P22 P22
30x60R 298x598mm R16 R16 R16



Mosaic Metalcrete Warm Silver (5x30) Nat.
30x30 298x298mm R45

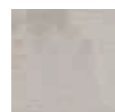
Grés Vidrado · Glazed tiles
Grès émaillé · Glasiertes Steinzeug



Metalcrete Warm Silver (M10x10) Plus
30x30 297x297mm G27



Metalcrete Warm Silver Nat.
M20x20 197x197mm G23



Metalcrete Decor Warm Silver Nat.
M20x20 197x197mm G23



Metalcrete Warm Silver 60x60R · Metalcrete Warm Silver 30x60R · Metalcrete Warm Silver M10x10

www.recer.pt

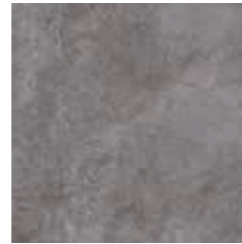
Porcelánico · Porcelain Tiles
Grès Cérame · Feinsteinzeug



Metalcrete Iron Nat.
120x60R 1198x598mm R32



Metalcrete Iron Nat. Plus
60x60 608x608mm P24 P24
60x60R 598x598mm R19 R19



Metalcrete Iron Nat.
45x45 455x455mm P19



Metalcrete Iron Nat.
90x90R 888x888mm R32

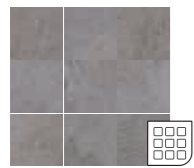


Metalcrete Iron Nat. Plus AS
30x60 305x605mm P22 P22 P22
30x60R 298x598mm R16 R16 R16



Mosaic Metalcrete Iron (5x30) Nat.
30x30 298x298mm R45

Grés Vidrado · Glazed tiles
Grès émaillé · Glasiertes Steinzeug



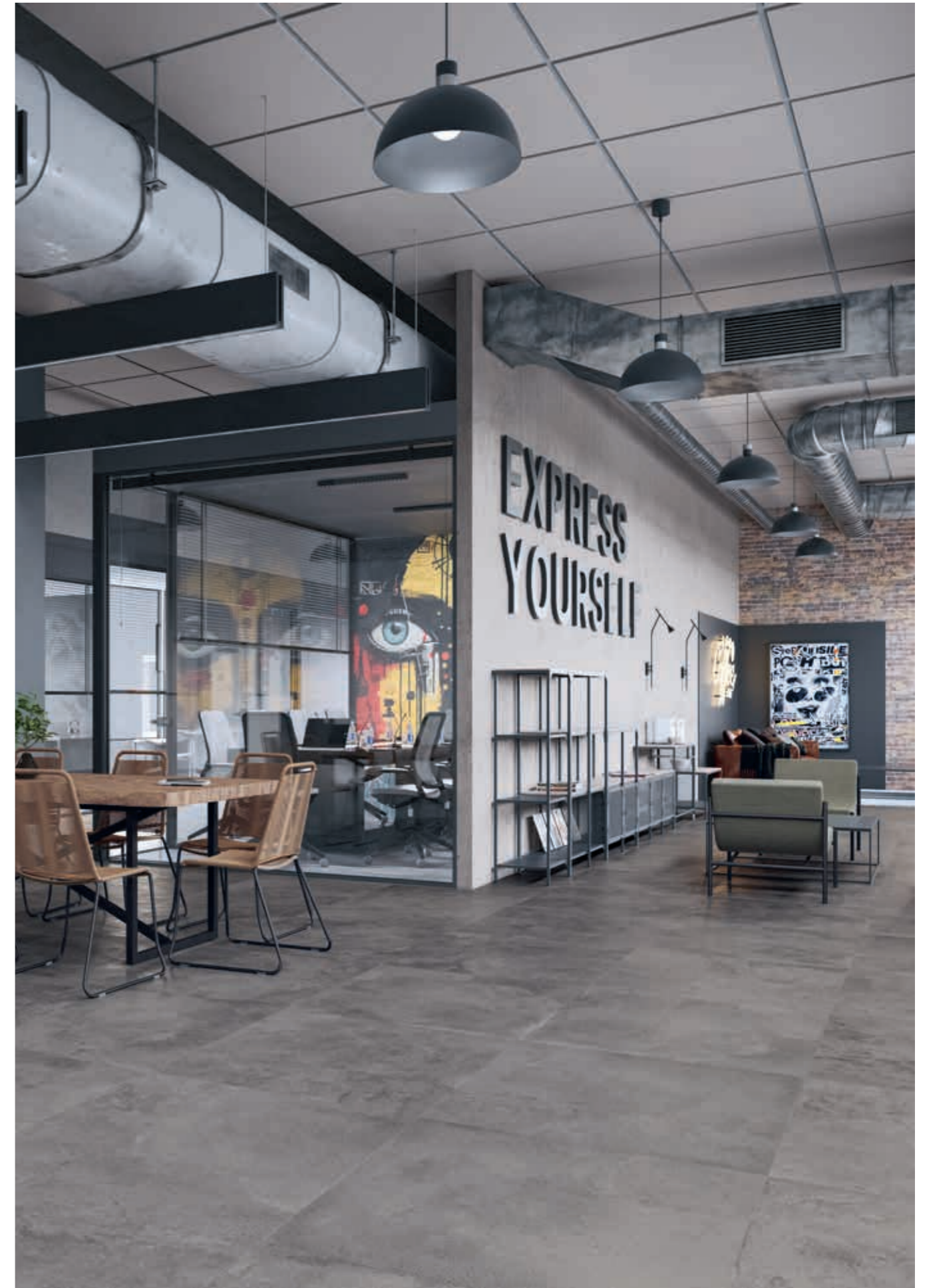
Metalcrete Iron (M10x10) Plus
30x30 297x297mm G27



Metalcrete Iron Nat.
M20x20 197x197mm G23



Metalcrete Decor Iron Nat.
M20x20 197x197mm G23



Metalcrete Iron 90x90R

www.recer.pt

METALCRETE

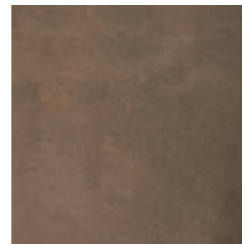
Porcelânico · Porcelain Tiles
Grès Cérame · Feinsteinzeug



Metalcrete Corten Nat.
120x60R 1198x598mm R32



Metalcrete Corten Nat. Plus
60x60 608x608mm P24 P24
60x60R 598x598mm R19 R19



Metalcrete Corten Nat.
45x45 455x455mm P19



Metalcrete Corten Nat.
90x90R 888x888mm R32

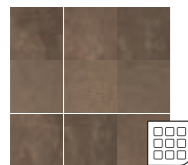


Metalcrete Corten Nat. Plus AS
30x60 305x605mm P22 P22 P22
30x60R 298x598mm R16 R16 R16

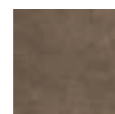


Mosaic Metalcrete Corten (5x30) Nat.
30x30 298x298mm R45

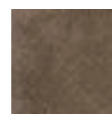
Grés Vidrado · Glazed tiles
Grès émaillé · Glasierteres Steinzeug



Metalcrete Corten (M10x10) Plus
30x30 297x297mm G27



Metalcrete Corten Nat.
M20x20 197x197mm G23



Metalcrete Decor Corten Nat.
M20x20 197x197mm G23



Metalcrete Warm Platinum 60x60R · Metalcrete Warm Platinum 30x60R · Metalcrete Warm Platinum M10x10 · Metalcrete Corten 30x60R · Metalcrete Corten M20x20 · Metalcrete Decor Corten M20x20



Formato (cm) Size (cm)	Formato (mm) Size (mm)	Espessura (mm) Thickness (mm)	Peças Pieces	m ² aprox sqm approx	Kg	Caixas Boxes	m ² aprox sqm approx	Kg
120x60R	1198x598	9,5	2	1,44	31,80	34	48,96	1089
90x90R	888x888	10	2	1,58	35,75	22	34,76	814
60x60	608x608	9,5	3	1,10	23,13	40	44,00	950
60x60R	598x598	9,5	3	1,07	22,67	44	47,08	1020
45x45	455x455	8	6	1,24	22,80	66	81,84	1527
30x60	305x605	7,8	8	1,47	24,84	40	58,80	1013
30x60R	298x598	7,8	8	1,43	23,93	40	57,20	975
30x30 Mosaic	298x298	7,8	11	1,00	15,98	30	30,00	499
30x30 (M10x10)**	297x297	6	90	0,90	10,71	72	64,80	800
M20x20	197x197	6	25	1,00	12,30	112	112,00	1397
10x90R***	100x888	10	10	8,98	19,32	45	404,10	883
8x60***	80x605	7,8	13	7,80	10,60	96	748,80	1018
8x60R***	80x598	7,8	13	7,80	10,20	96	748,80	994
8x45**	80x455	8	32	14,40	19,42	56	806,40	1087



Rodapé*

Formato (cm)	Formato (mm)	U
10x90R	10mm	U37
8x45	8mm	U18
8x60	7,8mm	U22
8x60R	7,8mm	U25



Degrau*

Formato (cm)	Formato (mm)	U
120x60R	9,5mm	U62
30x90R	10mm	U49
45x45	8mm	U32
30x60	9,5mm	U36
30x60	7,8mm	U34
30x60R	9,5mm	U39
30x60R	7,8mm	U35



Degrau com bordo

Formato (cm)	Formato (mm)	U
30x120R	9,5mm	U65
30x90R	10mm	U65
30x45	8mm	U57
30x60	9,5mm	U60
30x60	7,8mm	U58
30x60R	9,5mm	U61
30x60R	7,8mm	U59

* Ver quantidade mínima na pág. 458 - See minimum quantity on page 458 - Voir la quantité minimale à la page 458 - Mindestmenge siehe Seite 458

** Colado em rede de 9 peças - In set of 9 pieces mesh-mounted - Collé sur trame de 9 pièces - Im Satz von 9 Fliesen auf Netz geklebt
*** Rodapé: Metros lineares - Skirting: Linear meters - Plinthe: Mètres linéaires - Sockelleisten: Laufende Meter